



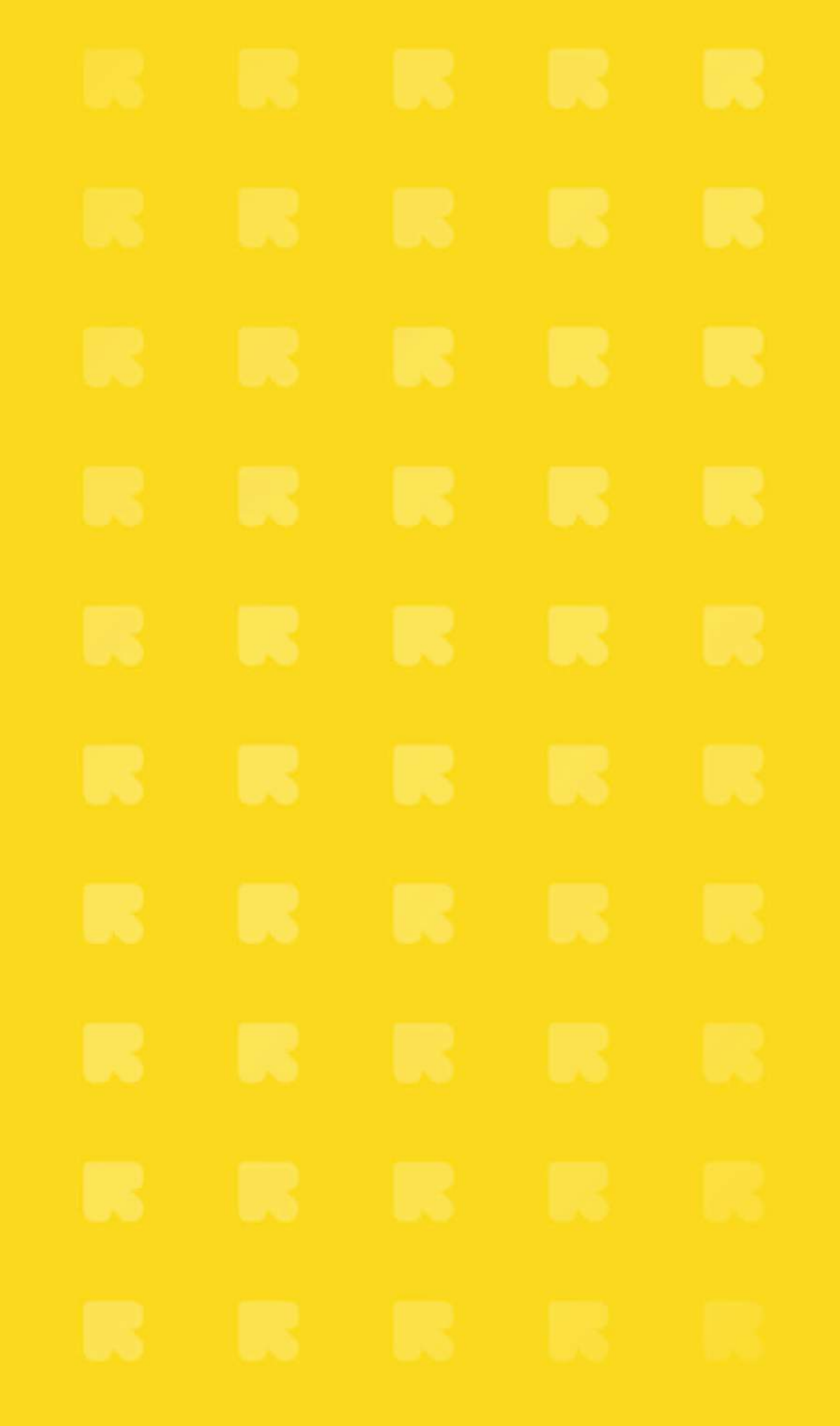
ROCHESTER  
INDEPENDENT  
COLLEGE



## PROSPECTUS

2025 / 26





Prospectus

“Rochester Independent College’s use of testing and reflection mirrors a lot of what I used at medical school.”

Conor, Rochester Alumni  
Graduate of Newcastle Medical School

“It would be hard to find better provision for an artist.”

Good Schools Guide

## A Warm Welcome to Rochester Independent College

Rochester Independent College is a school like no other. Our unique campus and friendly staff make the college feel more like a home than a school. There is no uniform, no bells ring, and everybody is on first-name terms.

However, that doesn’t stop Rochester from being one of the top schools in the UK for student progress at A-level. And it doesn’t stop us preparing our students for success: their hard work and first-class results mean they go on to win places at a wide range of top universities.

Most students at Rochester Independent College join us from Kent, London, and other areas around the UK.

We also welcome international students from over 40 countries every year, who contribute diversity and global perspectives to the college. No matter where our students are from, they find Rochester to be a place that lets them search for their own answers, voice their opinions, and think critically, creatively and independently.

We warmly welcome you to see for yourself what Rochester can offer.





# Alistair Brownlow

## Principal



Our Principal Alistair Brownlow joined Rochester Independent College in 1997 after teaching English in Russia and Romania. Educated at St Andrews and Glasgow, Alistair teaches A-level English Literature and advises students on university applications.

You'll be taught by specialist teachers, many of whom are also examiners. Some have Master's level qualifications and PhDs or are continuing to work towards them, helping to sustain a lively academic and creative environment.

Many of our teachers are also textbook authors, artists, film makers and musicians. Students are prepared for their GCSEs and A levels with help from professionals who are really in the know about what is required.

# RIC at a Glance

A few of the reasons that students love Rochester Independent College:

RIC is the home of the Great British Economics Olympiad, running the competition to select the team each year that competes in the International Economics Olympiad.

Student population - 60% UK and 40% international with 40+ nationalities represented.

31% A\*- A, 57% A\* to B and 82% A\* to C grades in A-Level in 2025 with a non-selective intake.

40+ subjects to choose from at GCSE and A-level, with any combination possible.

Full boarding on campus for students age 13+. Mainly single rooms with some en-suites.

37 minutes from London St Pancras by direct high-speed train.

Flexible one- or two-year GCSE and A-level courses with September, January, and April start dates.

Specialist medical preparation programme.

Royal Thai Government Scholarship students regularly join Rochester and achieve academic results.

Top 10 university placements including UAL, UCL, Manchester, Bristol, Leeds, Nottingham and Exeter.

Rochester has an excellent track record of helping students win a place on competitive courses such as Medicine, Dentistry and Law.

Winners of ISA National Award for Excellence and Innovation in Fine Art.

UAL Foundation Diploma in Art and Design



“The teaching at Rochester is rigorous and tailored to the best possible exam results. It offers a broad education combining its original focus on getting students into competitive courses such as medicine and dentistry with an emphasis on the creative arts.”

Liz Lightfoot, The Independent



# Academic Study

Students have a huge choice of subjects at Rochester – and can study them in any combination.

## What is learning like at Rochester Independent College?

- Teaching is similar to a seminar or tutorial at university. Rather than individual desks, students gather around a table where tutors encourage them to discuss different aspects of a topic critically.
- Classes are an average of just eight in size, and students have between five and eight hours contact time per subject, per week.
- All students in Sixth Form have a Personal Tutor who they meet with regularly to discuss progress, targets, and future aspirations. Students also receive one-to-one tutorials and study support sessions, where they can address any areas for improvement.
- Formal reports are regularly sent to parents, and Personal Tutors can be contacted via phone or email with any questions or concerns.

Students have a huge choice of subjects at Rochester and can study them in any combination.

## Courses

### Lower School - Years 7-9, Key Stage 3

Our Lower School is a thriving alternative secondary school destination to the academically selective grammar and traditional UK independent schools. For students from the age of 11, RIC's Lower School combines a friendly and informal approach with the teaching excellence and pastoral support of a top independent school.

### GCSEs

GCSEs are usually for students aged 14-16 and are the precursor qualification to A-levels. They are taken in multiple subjects (from a choice of around 30) over two years. English, Maths and a Science are compulsory and all other subjects are optional.

### A-levels (Sixth Form)

A-levels are the main school-leaving qualifications in Britain for students aged 16-19, and are globally respected. At Rochester, three or four A-levels are studied over two years from a choice of 40+ different subjects, with no restrictions on the combination that can be taken.

Rochester offers variations on the main two-year A-level and GCSE options, including:

- One-year A-level courses
- A-level preparation programmes
- Re-takes of qualifications for students who wish to improve upon past results.
- One and two year GCSE courses
- Specialist Medical Courses
- Specialist Creative & Digital Media programmes

### English Language Teaching

Expert English language support is readily available to international students who would like to improve their language skills or prepare for an IELTS exam.

Classes are timetabled alongside academic subjects. 60% of our students are native English speakers, which means it is natural for all students to use English as a common language.





Imagine a school where the arts are at the centre of the curriculum and creativity is found in every corner of the campus.

A school with a creative buzz where you'll be taught by practicing graphic designers, artists, filmmakers, illustrators, and musicians, and where you'll be studying alongside those who share your enthusiasms and interests.

A school with an extensive creative arts and design subject list, where digital and visual arts are treated as viable options at both GCSE and A Level.

A school which doesn't force its students into a house style but helps your own practice develop individually, guiding you towards an impressive portfolio as well as top A level results.



- A school with an award winning visual arts and boarding campus.
- A school where you can premiere your short films in the campus cinema.
- A school where you can excel in the classroom as well as on the stage or in the studio, combining rigorous academic study with developing your creative voice.
- A school where you can access instrumental tuition and have space to create, practice and rehearse.
- A school with outstanding facilities for honing your craft where students have free use of a fully equipped dark room, a potters' wheel and ceramics studio, two textiles studios with computer aided embroidery machines, dedicated art studios, five mac labs with music sampling and digital editing software and media suites equipped with industry standard software.
- A school that feels like you are already at art college, film or drama school while preparing you successfully for entry to the best ones.
- A school where UAL has been our top university destination over the last five years.
- A school where digital media is taken as seriously as fine art and you can work on animation, installation and projection, mobile phone games and visual poetry.
- A school that stages annual full scale musicals and plays in professional local theatres.
- A school with inspiring gallery spaces to showcase student work and where you can curate your own exhibitions and have your work published in annual catalogues.





Available subjects

GCSE

Accounting	Core and Additional Science	Geography	Physical Education
Art	Drama	German	Physics
Biology	Economics	Graphic Design	Russian
Business Studies	English	History	Spanish
Chemistry	English Literature	Mathematics	Textiles
Chinese	Film Studies	Media Studies	Turkish
Classical Civilisation	French	Music	
Computing		Photography	

A-level

Accounting	Economics	Italian	Politics
Art and Design	English Language	Japanese	Psychology
Biology	English Literature	Latin	Religious Studies
Business Studies	Film Studies	Mathematics	Russian
Ceramics	French	Media Studies	Sociology
Chemistry	Further Mathematics	Music	Spanish
Chinese	Geography	Music Technology	Sports Studies
Classical Civilisation	German	Persian	Statistics
Computer Science	Global Perspectives	Philosophy	Textiles and Fashion
Dance	Graphic Design	Photography	Theatre Studies
Digital Media and Design	History	Physics	Turkish
	History of Art	Polish	

# University Support

Winning a place at a top university is challenging, but our programme of tailored support gives students the best chance of success. A typical programme may run as follows:



Beginning of Year 12/A-level:

A tutor is assigned to every student in the Sixth Form to offer careers support and guidance on UCAS personal statements, applications, and references.



Year 12 Autumn Term:

International students prepare short talks about themselves and their plans for the future. This helps them articulate their aims and get quality feedback from a variety of sources.



Year 12 Autumn Term:

Visits to top universities in London such as the London School of Economics (LSE) and University College London (UCL), as well as UCAS exhibitions to learn about the different courses on offer.



Year 12 Spring and Summer:

Students attend personal statement workshops for guidance on careers, universities, and suitable summer holiday activities and work experience.



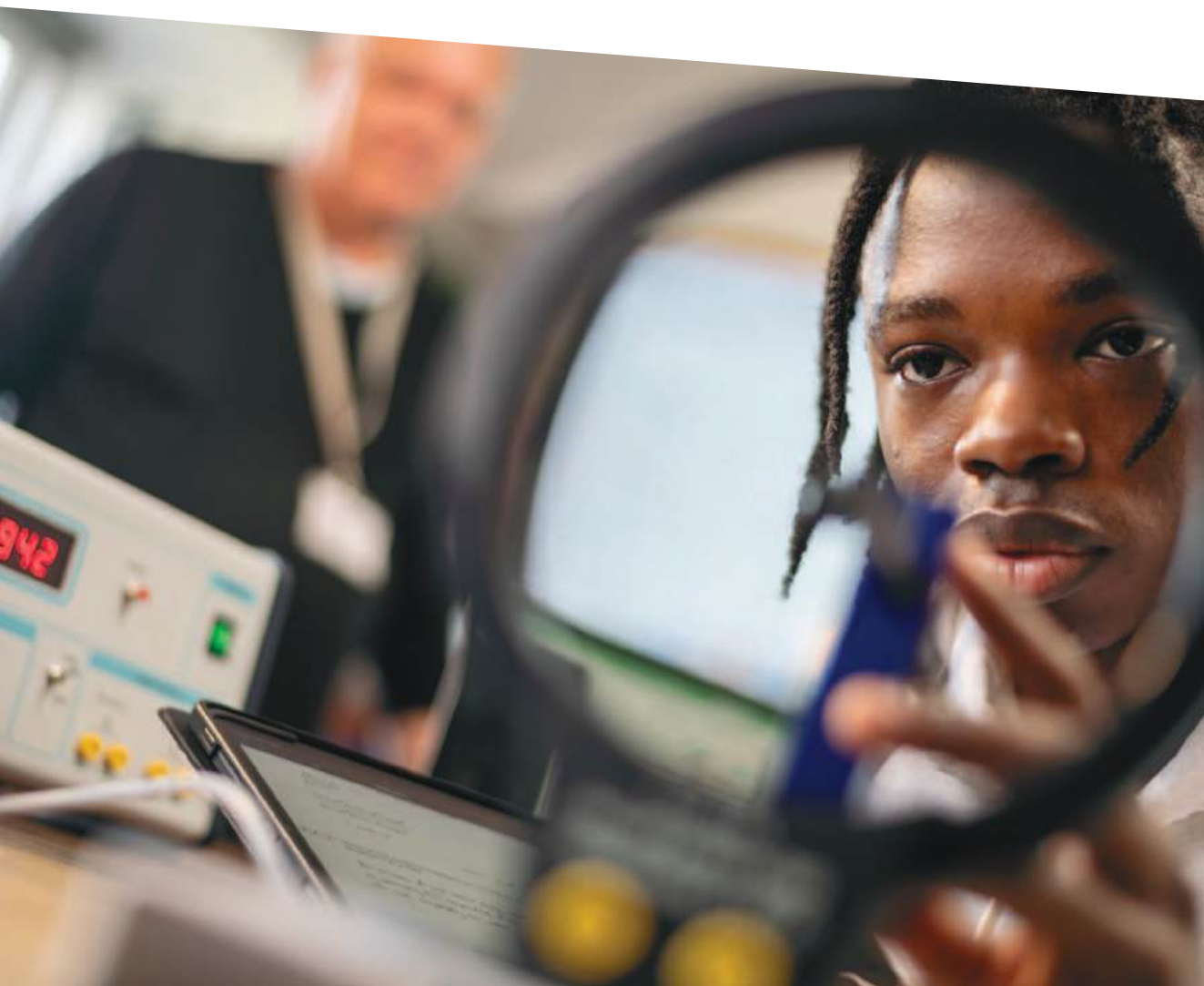
Year 12 Spring and Summer:

Students may also receive guidance and support from industry-leading experts at our sister companies at Dukes Education specialising in Oxbridge, Ivy League & US, Medicine and Law applications and work placement.



Beginning of Year 13:

Tutors, Heads of Sixth Form, and specialist UCAS staff work with every student individually to create strong university applications in the year before they apply.



“I was taught by teachers who are excellent in their subject. With the small class size, teachers were able to answer all questions and give constructive feedback to homework. In addition, there was a weekly practice test to make sure that we really understood the lessons and to make us familiar with the exam style.”

Jirayus, Rochester Alumni  
Graduate of Trinity College Cambridge

# University Destinations

Students aiming for highly ranked institutions and competitive academic courses thrive at Rochester. Over the past five years for example our students have packed their bags to start courses at every G5 university, in a wonderfully wide range of subjects including:

## **Oxford University**

- Chemistry
- Mathematics

## **Cambridge University**

- Medicine
- Classics
- English

## **Imperial College**

- Physics
- Computing

## **London School of Economics**

- Philosophy and Economics
- Law

If your ambition is to join the next generation of students heading from Rochester to a G5 or Russell Group university we'll give you the expert guidance, outstanding teaching, and individual attention to help you get there. Our blend of academic focus and creative culture helps students build the confidence and independence they'll need to succeed.

The abundance of Creative Arts provision and teaching also means that many students progress directly to Fine Arts degrees at top institutions without a foundation year.

## **UCL**

- Mechanical Engineering
- French and English
- Philosophy and History of Art
- Creative Arts and Humanities
- Physics
- Mathematics
- Anthropology
- Economics
- Pharmacy
- Medicine
- Fine Art
- Natural Sciences
- Politics and Sociology
- Psychology

In recent years, students have gone on to study Art, Media, Music, or Film at:

## **BIMM**

Falmouth University  
Istituto Marangoni  
Kingston University  
UAL Central St Martins  
UAL London College of Fashion  
University of Creative Arts  
UCL Slade School of Art

**For the full list of university destinations, go to the back of the prospectus.**





# Lower School Years 7-11

A small class environment committed to personal development, which promotes academic and creative excellence and offers a nurturing and informal approach to education.

Established as a sixth form in 1984, RIC has been offering places for children in Year 7 since 2006. Our Lower School is now a thriving alternative secondary school destination to the academically selective grammar and traditional independent schools available locally.

RIC's Lower School combines a friendly and informal approach with the teaching excellence and pastoral support of a top independent school.

There's a happy and lively atmosphere where academic success follows naturally from students being settled in their environment and engaged by enthusiastic and talented teachers. At RIC the transition from primary to secondary school is smoother and less intimidating than is sometimes possible at a larger school.

Our staff are as committed to our students' wellbeing as they are to their academics and in the Lower School we have created a warm and welcoming atmosphere where everyone feels valued and respected where all can find their tribe, place and direction.








# Life at Rochester

Situated in the beautiful and historic city of Rochester the College is conveniently located for all of London's transport links.

Rochester is situated 37 minutes southeast of London by train in the county of Kent. With its charming cobbled high street, castle, cathedral, and a range of vintage shops, bookstores, and cafes, the city is an idyllic place to study. It also enjoys excellent transport connections, with Gatwick Airport 50 minutes away by car and Heathrow Airport 70 minutes. Paris and Brussels connections from St Pancras.

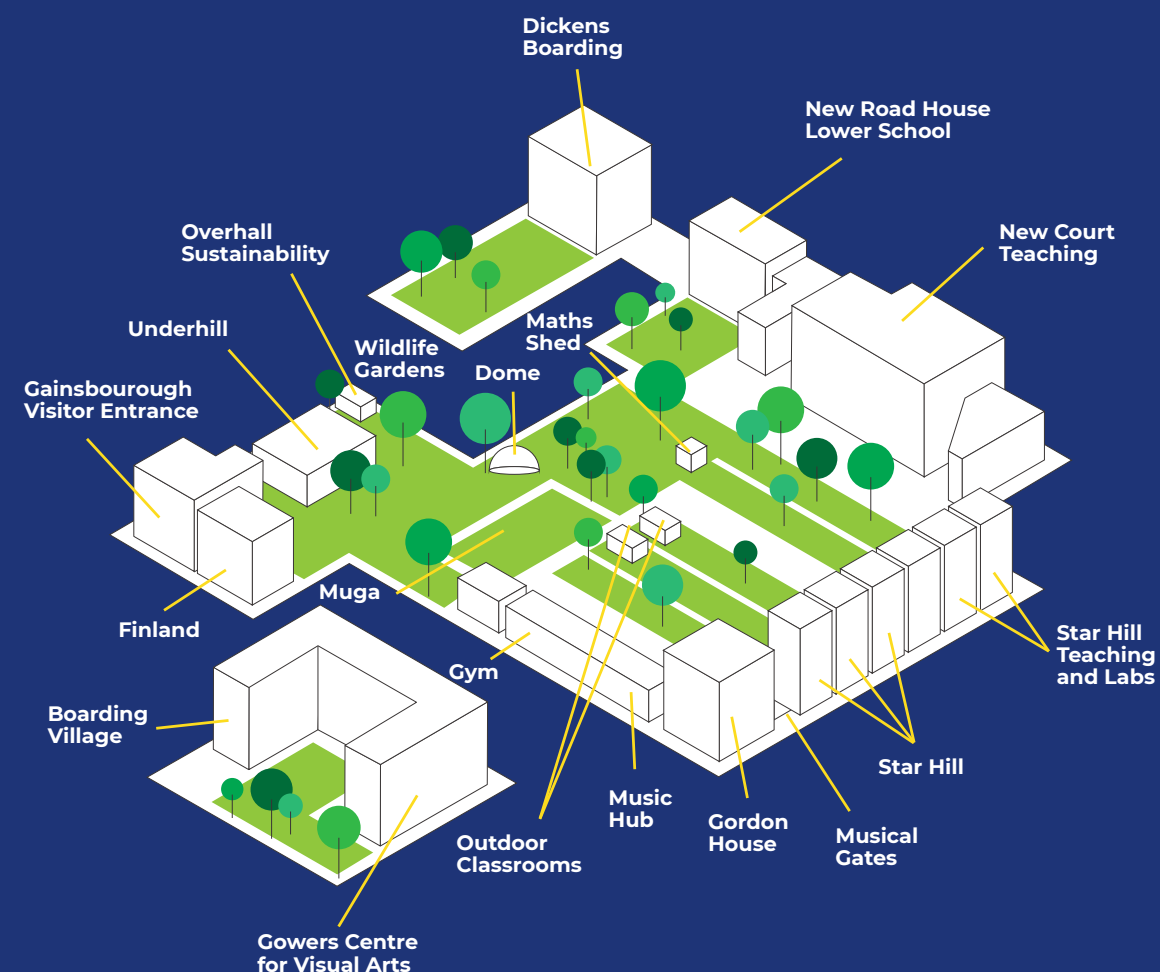
The college itself is based in our enclosed campus of historic Georgian and contemporary buildings. Our award-winning gardens, natural dye garden, underground theatre space, musical gates and Mathematics garden house all add to the college's unique and homelike atmosphere.



-  37 mins by train
-  Gatwick: 50 mins by car
-  Heathrow: 70 mins by car

# Campus Map

Our enclosed campus provides a welcoming, safe and secure environment for students.





# Boarding & Student Care

At Rochester we know that academic and personal development comes naturally to happy students.

We make student welfare our priority and aim to create a place where everyone feels welcome. At Rochester, teachers treat students like adults, building mutual respect. The result is that many students say they have never been happier at school.

International students are fully integrated in all aspects of the college. From academics to life outside the classroom, Rochester has an inclusive, unified student body. In 2024 a brand new state-of-the-art boarding village opened with 47 ensuite study bedrooms.

## Life as a Boarder

Up to 180 of the 425 students at the college board each year. As boarding pupils, students will be part of a close, supportive community. Students all live on-site in single rooms (with some en-suites available) and breakfast, lunch, and dinner are freshly prepared on the premises. Boarding houses also have comfortable common rooms where film nights and other social activities take place every week. House Parents (Tutors who live in college) are always on site, ensuring there is someone to talk to and oversee the students at all times.

Student care at Rochester is based on developing each student's interests and helping them achieve as much as they possibly can. Personal Tutors have regular meetings to monitor students' wellbeing and discuss progress, targets and future aspirations.



“RIC has been literally transformative. I’ve felt so much happier here. You’re allowed to be yourself, be independent and discover who you are.”

Lexi, RIC Alumni





# Outside the Classroom

Our students have a huge choice of activities and clubs outside of lessons, for enrichment, personal development... or just for fun!

Rochester also organises trips outside college, designed to link students' academic studies to the wider world. These create a broader and more rounded understanding of a subject, which in turn can give students an advantage in their university applications. Activities have included visits to galleries, theatre and museums in London, trips to Bath, Oxford and Shakespeare's Stratford, surfing in Cornwall, a graffiti tour around London, a hiking trip to the Brecon Beacons and a day at Brands Hatch racing track.

The college offers clubs from chess, coding, drama, textiles, and film to yoga, photography, Dungeons and Dragons, running, basketball, boxing, debating and DofE programme. We also frequently create new clubs when students express an interest.

All students are encouraged to stay fit and active. Onsite Rochester has its own MUGA (Multi-use games area) and well-equipped gym. The college also uses Medway Park – a multi-million-pound sports facility with swimming pool, athletics track, sports centre, fitness suite, and spa. There are also school teams for football, sailing trips and opportunities to try fencing or climbing.

Rochester is one of the leading creative boarding schools in the UK, and our Arts staff are all practitioners with industry and studio experience in Filmmaking, Fine Art, Illustration, Graphic Design, Digital Media, Photography, Fashion, and Textiles. The school also has its own 100-seat theatre for small-scale productions.

Individual Music lessons are taught by peripatetic staff and there are rooms to practice individual instruments. Musical groups are active in college and there is a Rochester Summer Festival where Performing Arts students often showcase their talents.





# Applications

Rochester achieves superb results despite being non-selective in admissions. In our experience, students can succeed at Rochester regardless of success at previous schools.

We are also flexible enough to be able to enrol students right through the academic year, and can often help when students need to change schools at short notice.

Complete our application form by going to:  
[www.rochester-college.org.uk/apply](http://www.rochester-college.org.uk/apply)

Send your latest school report, teacher reference, passport and birth certificate to [admissions@rochester-college.org.uk](mailto:admissions@rochester-college.org.uk)

Attend a Zoom/Skype interview or college visit

If you not a native speaker of English, take an English test.  
Subject specific tests are required for some A level subjects

Offer of a place

Complete acceptance form

Invoice will be sent

“Students’ personal development is excellent. Students’ attitudes to their work and learning are exemplary. The college provides excellent support and guidance, which enhances students’ personal development. It is highly successful in its aim to develop self-knowledge and self-esteem.”

ISI Inspection Report

## Recent Awards

We’re always aiming to be the best that we can be.

**The college and its students are proud to have received the following awards:**

- Good Schools Guide awards for Mathematics, Chemistry, Film Studies and English Literature
- ISA National Award for Excellence and Innovation in Fine Arts
- Top Award in the UK for the 50th Royal Society of Chemistry Olympiad
- Student artwork is selected for the Royal Academy Student Summer Exhibition
- Winner of BSA Khadija Saye Photography Award - multiple years
- International Centre for Economics Olympiad
- BSA award for boarding house refurbishment 2025
- BSA Award for Excellence in Boarding – Refurbishment or New Building.



# University Destinations 2025

Course Type	Destination University	University Course
Two Year Course	Bath Spa University	Architecture
One Year Course	Bath Spa University	Sports Management
Two Year Course	Bath Spa University	Photography (Professional Placement Year)
Two Year Course	Baylor University, United States of America	Undergraduate Programme
Two Year Course	BIMM University	Popular Music Performance
Two Year Course	BIMM University	Popular Music Performance
Two Year Course	Bournemouth University	Communication and Media
Two Year Course	California State University Fullerton	Architecture
Two Year Course	Canterbury Christ Church University	Games Design with Foundation Year
Two Year Course	Canterbury Christ Church University	Game Design
Two Year Course	Canterbury Christ Church University	Game Design
2024 Gap Year	Canterbury Christ Church University	Graphic Design with Foundation Year
Two Year Course	Cardiff University	English Literature with Creative Writing
Two Year Course	Cardiff University	Engineering with Foundation Year
One Year Course	City St Georges, University of London	History and Politics
Year 14/One Year Resit	City St Georges, University of London	International Political Economy
Two Year Course	City St George's, University of London	Economics
Two Year Course	Commerical Pilot Training	2Fly Pro-Pilot Programme (Florida US/ Exeter UK/Nottingham UK)
Year 14/One Year Resit	Durham University	Finance
Year 14/One Year Resit	Durham University	Psychology
Two Year Course	Employment	
Two Year Course	Gap Year	
Two Year Course	Gap Year	
Two Year Course	Gap Year	
Two Year Course	Goldsmiths, University of London	Sociology with Criminology
Two Year Course	JCA London Fashion Academy	Fashion: Design, Branding and Entrepreneurship
One Year Course	Keele University	Psychology and Criminology
One Year Course	King's College London	Chemistry
Two Year Course	King's College London	Digital Media and Culture
Year 14/One Year Resit	King's College London	Neuroscience and Psychology
Two Year Course	Kingston University	Fashion Promotion and Communication
Two Year Course	Kingston University	LLB International Law
Two Year Course	Kingston University	Interior Design
Two Year Course	Kingston University	Art Foundation Course
Two Year Course	Kingston University	Fashion Promotion and Communication
Two Year Course	Kingston University	Creative and Cultural Industries: Design Marketing
Two Year Course	Kingston University	Architecture
Two Year Course	Lancaster University	Psychology
Two Year Course	Liverpool International College	Engineering
Two Year Course	Loughborough University	Art and Design Foundation Course
Year 14/One Year Resit	Manchester Metropolitan University	Fashion Marketing
Two Year Course	Manchester Metropolitan University	Illustration with Animation
Year 14/One Year Resit	Medical University of Plovdiv	Medicine
Two Year Course	Newcastle University	Electrical and Electronic Engineering
Two Year Course	Norwich University of the Arts	Fine Art
One Year Course	Nottingham Trent University	Games Art
Two Year Course	Oxford Brookes University (deferred 2026)	Engineering Foundation
One Year Course	Post results application to Australia	Computer Science
Two Year Course	Purdue University, United States of America	Computer Science
Two Year Course	Queen Mary, University of London	Applied Artificial Intelligence
Two Year Course	Ravensbourne University	Fashion Management
Two Year Course	Royal Agricultural College	Agricultural Business Management
Two Year Course	Royal Holloway, University of London	Management with International Business (Year in Business)
Two Year Course	Royal Holloway, University of London	Law with Criminology
Two Year Course	Royal Holloway, University of London	Psychology

Year Group	Destination University	University Course
Two Year Course	Royal Holloway, University of London	Politics, Philosophy and Economics
Two Year Course	Rome University of Fine Art	Graphic Design
One Year Course	Slade Institute, University College London	Art and Technology
Year 14/One Year Resit	SOAS, University of London	Social Anthropology and World Philosophies
Two Year Course	Tbilisi State University	Dentistry
Two Year Course	Teeside University	Games Art
Two Year Course	The University of Edinburgh	Sociology
Two Year Course	Universiti Kuala Lumpur	Creative Undergraduate Degree
Two Year Course	University College London	Mathematics
One Year Course	University College London	Education, Society and Culture
Year 14/One Year Resit	University College London	History and Politics of the Americas with a Year Abroad
Two Year Course	University of Aberdeen	Biomedical Science
Two Year Course	University of the Arts London: London College of Communication	Graphic Branding and Identity
One Year Course	University of the Arts London: London College of Communication	Graphics and Media Design
2024 Gap Year	University of the Arts London: London College of Communication	Immersive Media and Mixed Reality
Two Year Course	University of the Arts, London College of Communications	Foundation for Fashion
Two Year Course	University of the Arts, London: London College of Communciation	Graphics and Media Design
Two Year Course	University of the Arts, London: London College of Communication	Advertising
Year 14/One Year Resit	University of Bath	International Management with study or work abroad
One Year Course	University of Birmingham	Pharmacy
Year 14/One Year Resit	University of Central Lancaster	Medical Sciences (Foundation Year)
Two Year Course	University of East London	Game Design
Two Year Course	University of Glasgow	Mechanical Engineering
2024 Gap Year	University of Leeds	History
Two Year Course	University of Leicester	Economics
Two Year Course	University of Lincoln	Sound and Music Production
Year 14/One Year Resit	University of Liverpool	Geography
Year 14/One Year Resit	University of Liverpool	Medicine
One Year Course	University of Loughborough	International Relations
Two Year Course	University of Manchester	Economics
Year 14/One Year Resit	University of Manchester	Biosciences (Foundation Year)
Two Year Course	University of Melbourne	Undergraduate Degree, likely to major in Economics (not chosen until Year 2)
Two Year Course	University of Sheffield	Mechatronics and Robotic Engineering
Year 14/One Year Resit	University of Sheffield	Medicine
Two Year Course	University of Southampton	Computer Science
Two Year Course	University of St Andrews	Psychology
Two Year Course	University of Surrey	Buisness Economics and Data Analytics
One Year Course	University of Surrey	Mathematics
Two Year Course	University of Sussex	Sociology
2024 Gap Year	University of Sussex	Media Communication
Two Year Course	University of Sussex	Liberal Arts
Two Year Course	University of Warwick	Linguistics with Modern Languages with Intercolated Year
Year 14/One Year Resit	University of Warwick	Chemistry with International Placement
Two Year Course	University of Westminster	Film
One Year Course	University of Westminster	Music Production, Performance and Business
Two Year Course	University of Westminster	Architecture
One Year Course	University of Westminster	Business Management
Two Year Course	University of York	Marketing
Year 14/One Year Resit	University of York	Economics and Finance
Year 14/One Year Resit	University of York	Data Science



# University Destinations 2024

Year Group	Destination University	University Course
Y13	Academy of Contemporary Music	Music production and sound engineering
Y13	AMD Munich	Fashion Design
Y13	Arts University Bournemouth	Modelmaking
Y13	Aston University	Business and Social Science
Y13	Barcelona Buisness School	Business Management
Y13	BIMM University	Music Production
Y13	BIMM University	Musical Theatre and Dance
Y13	Birmingham University	Biological Science
Y13	Brighton University	Business & Marketing
Y13	Bristol University	Data Science
Y14	Bristol University	Maths & Comp Sci
Y13	Bristol University	Engineering Design
Y13	Debrechen, Budapest Hungary	Medicine
Y14	Cambridge University	Medicine
Y14	Cambridge University	Classics
Y13	Canterbury Christchurch	Game Design
Y13	Canterbury Christchurch	Psychology
Y13	Canterbury Christchurch	Creative Writing
Y13	Centro Universidad de Tecnologia y Arte, Madrid	Digital Design
Y14	City, University of London	Finance
Y13	City, University of London	Mecahnical Engineering
Y14	Edinburgh University	Astrophysics
Y14	Erasmus, Rotterdam	Business Management
Y13	Essex University	Sociology
Y14	Glasgow University	Chemistry
Y13	Glion, Switzerland	Business
Y13	Greenwich University	Graphic and Digital Design
Y13	Hertfordshire University	Digital Animation
Y13	INTO Manchester	International Business
Y13	JCA London Fashion	Fashion: Design, Branding and Entrepreneurship
Y14	Kent University	Mechanical Engineering
Y13	Kent University	Architecture
Y13	Kent University	Business/Marketing
Y13	Kent University	Clinical Psychology with a Placement Year
Y14	Kent University	Economics
Y13	King's College London	Law
Y13	King's College London	Neuroscience
Y14	King's College London	Molecular Genetics
Y14	Kingston University	Pharmaceutical Science
Y13	Kingston University	Photography
Y13	Lancaster University	Mathematics, Operational Research, Statistics, Economics
Y14	Leicester University	Chemistry
Y13	Leicester University	Biomedical Science
Y13	London Film Academy	Filmmaking
Y13	London Met	Interior Design
Y14	Loughborough University	Biological Sciences
Y14	Loughborough University	Psychology
Y13	LSE	Philosophy and Economics
Y13	Manchester University	History and French
Y14	Newcastle University	Film & Media
Y13	Newcastle University	Business, Accounting and Finanace
Y13	Nottingham Trent University	Economics
Y13	Nottingham University	Criminology
Y13	Oxford Brookes University	Engineering
Y13	Plymouth University	Architecture
Y14	Point Blank	Music Production & Sound Engineering
Y13	Portsmouth University	Law with Business

Year Group	Destination University	University Course
Y13	Queen Mary University	Linguistics with year abroad
Y13	Ravensbourne	Game Design
Y14	Ravensbourne	Animation
Y13	Reading University	Economics and Finance
Y13	Reading University	Finance
Y14	Regents University	Business
Y14	Royal Veterinary College	Bioveterinary Sciences
Y13	Semmelweis University Budapest, Hungary	Dentistry
Y13	SOAS	History
Y13	SOAS	Global Development
Y13	Southampton University	Biomedical Sciences
Y13	St George's, Grenada	Medicine
Y13	Surrey University	Civil Engineering
Y13	Sussex University	Psychology
Y13	Sussex University	Psychology with placement
Y13	Sussex University	Mechanical Engineering
Y14	Swansea University	Pharmacy
Y13	Swansea University	Computer Science
Y13	UAL, Camberwell	Photography
Y13	UAL, Chelsea College of Art	Fine Art
Y13	UAL, London College of Communication	Film Practice
Y13	UAL, London College of Communication	Interaction Design Arts
Y13	UAL, London College of Communication	Computer Animation and Visual Effects
Y13	UAL, London College of Communication	Music Production
Y14	UAL, London College of Communication	Documentary Photography
Y13	UCL	Mechanical Engineering
Y13	UCL	French and English
Y13	UCL	Philosophy and History of Art
Y13	UCL	Creative Arts and Humanities
Y13	East Anglia University	Psychology
Y14	East London University	Game Design
Y14	University of West London	Psychology
Y13	University of South Wales	Sports Coaching & Development
Y13	Warwick University	Economics
Y13	Westminster University	Architecture
Y13	Westminster University	English Literature
Y14	York University	English





# The Dukes Difference

Together we're *extraordinary*.

Members of the Dukes Education family of schools and educators are brought together by a common purpose: to give children the foundations for an extraordinary life.

## Why are we part of Dukes Education?

Parents ask why schools join Dukes Education, and what it means for their child's daily experience. The answer is simple: by being part of a network of over 50 schools across the UK and Europe, we benefit from shared expertise, innovation, and good practice.

Dukes also ensures our financial stability and provides ongoing capital investment, allowing us to enhance our facilities continually and offer exceptional learning opportunities for each child.



- University Prep
- Career Experiences
- Summer Schools
- Tutoring



**Social impact through giving**



**Nurturing leadership, inspiring change**



**Exclusive opportunities for families**



**Extraordinary experiences for our community**



**Rochester Independent College**

254 St Margaret's Banks  
Rochester  
Kent  
ME1 1HY

**E** [admissions@rochester-college.org.uk](mailto:admissions@rochester-college.org.uk)

**T** +44 (0)1634 828115

**[www.rochester-college.org.uk](http://www.rochester-college.org.uk)**



**APPLY NOW**